

Part No HMR-0001

Dated 04/10/10

Warning

Before using this firearm, read and follow these instructions.

If there is anything that you do not understand, get help from someone qualified in the safe handling of firearms



RIFLE

This instruction manual should always accompany the 17 HMR® rifle that it is issued with. If you lend, give or sell this firearm, this manual must go with it. Additional manuals for this rifle are available from Alexander Arms through your local dealer.

PRECAUTIONS

READ AND UNDERSTAND THIS MANUAL BEFORE REMOVING THIS FIREARM FROM ITS PACKAGING

This product is classified by the Alcohol and Tobacco Tax and Trade Bureau, as a Firearm. It is therefore potentially lethal.

WARNING. If this firearm is carelessly or improperly handled, unintentional discharge could result and could cause injury, death, or damage to property

CAUTION. Always keep and carry the rifle unloaded, without the magazine in place. Only load the rifle when you intend to shoot. Use only clean, dry original high quality commercially manufactured ammunition in good condition, which is marked as the caliber for this rifle.

CAUTION. Read this manual which gives basic advice on the proper handling and function of this rifle prior to using or loading the rifle. However your safety and the safety of others depend on your mature compliance with this advice. If unfamiliar with firearms seek advice from someone qualified in the safe handling of firearms.

WARNING: Do not exchange or switch bolt assemblies from one rifle to another. Doing so may result in injury, death or damage to property.

WARNING: The rifle operates with Rim fire ammunition, it is possible during operation to split a case and vent propellant gas into the mechanism.

Safety Glasses must be worn at all times.

The mechanism is designed to absorb such events but firing must be discontinued and the rifle cleaned and inspected prior to further use.

WARNING: Do not place any part of the body in proximity of the ejection port.

LIST OF SECTIONS

Precautions

- | | |
|--------------------------|-----------------------------|
| I. Main Features | IV. Maintenance |
| General Layout | Warnings |
| Assemblies | Lubricants |
| | Firearm disassembly |
| II. Safety Instructions | Firearm lubrication |
| General handling and use | Firearm assembly |
| Safety features | Magazine |
| | |
| III. Function | V. Unusual Operating |
| Loading | Environments |
| Unloading | |
| Firing | VI. Service and Repair |
| | |
| | VII. References |
| | VIII. Assembly of upper kit |
| | IX. Break in Procedure |
| | X. Models |

Main Features

General Layout

The Alexander Arms rifle is an automatic lightweight, blow back operated firearm with a magazine feed, produced in accordance with the most advanced manufacturing methods. It permits shots to be fired from all positions.

The firearm fires from a closed breach to provide the best potential for accuracy.

The upper and lower receivers may be separated easily for cleaning and inspection.

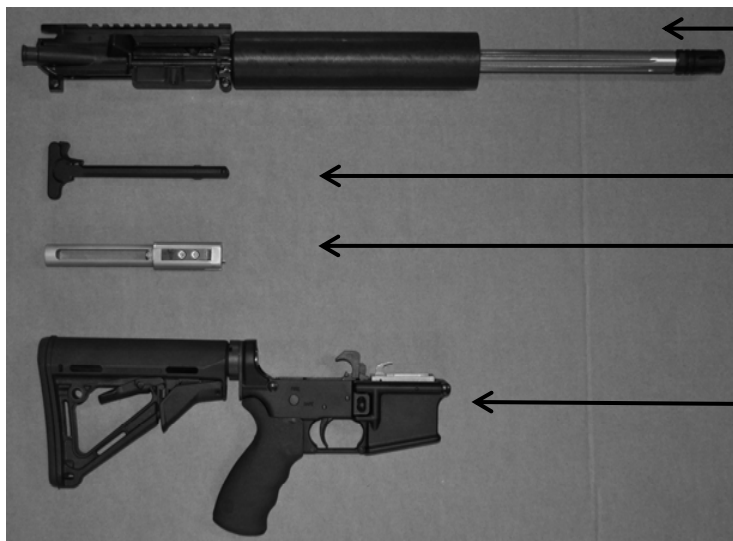
The barrel and chamber are manufactured from high grade steel to resist corrosion and fouling.

Ammunition is fed from a detachable magazine

- | | |
|-----------------|--|
| 1. Caliber | 17 HMR |
| 2. Weight | With magazine 3.5kg (7.5 lb) typically |
| 3. Length | Rifle with 18" barrel 991 mm (39") |
| 4. Width | Rifle with 18" barrel 62 mm (2.44") |
| 5. Height | Rifle with 18" barrel 218 mm (8.58") |
| 6. Fire Control | Safe, Single |
| 7. Ejection | Right hand side with shell deflector |



Assemblies



1. Upper
Receiver
Assembly

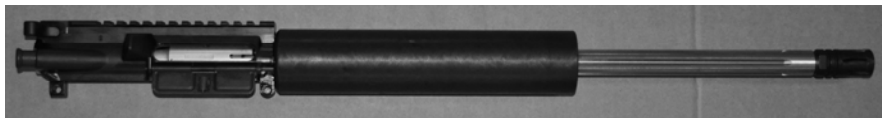
2.
Charging
Handle

3. Bolt
Assembly

4. Lower
Receiver
Assembly

Main Features

Upper Receiver



Receiver and forward assist with barrel, barrel extension and hand guard

The upper receiver carries the barrel and barrel extension which are fastened into the receiver by the threaded barrel nut under the hand guard.

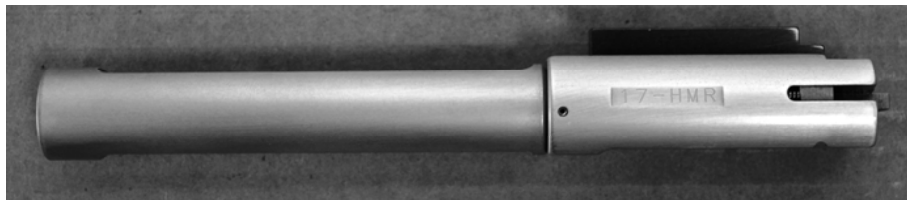
The upper receiver is machined to provide guides for the bolt assembly which rests under spring tension directly into the barrel extension.

The top of the upper receiver forms a picatinny style mounting rail.

The forward assist is a plunger mounted on the right hand side of the upper receiver and provides a method to push the bolt carrier fully forward. It is inoperable in the 17 HMR configuration.

Main Features

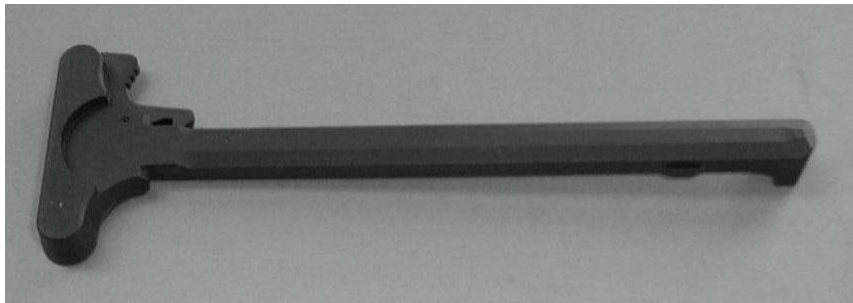
Bolt Assembly



The bolt assembly is a single self contained unit. It contains the following elements; bolt, bolt guide, firing pin, firing pin return spring, extractor, extractor spring. The unit is self contained and should not require disassembly. The bolt in conjunction with the recoil cassette and magazine block fire and feed the cartridges as well as extracting the spent case and ejecting it. The action of cycling the bolt in turn cocks the hammer for the next shot.

Main Features

Charging Handle



The charging handle consists of the following elements

1. Charging handle
2. Charging handle latch

The charging handle locates within the upper receiver and is used to draw the bolt assembly to the rear of the receiver.

Main Features

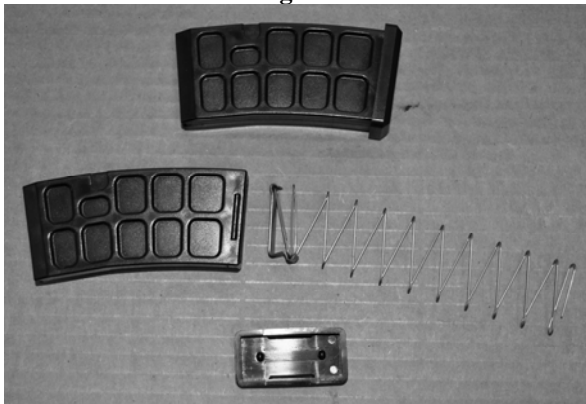
Lower Receiver



The lower receiver houses the trigger assembly, hammer and safety selector lever. The unit is machined to provide location for the ammunition feed magazine and also provides for the attachment of the stock and the pistol grip. The stock is fastened to the receiver by a threaded tube which houses the recoil buffer and recoil spring

The receiver also carries the front pivot pin and rear takedown pin that are used to attach the lower receiver to the upper receiver. These are retained by detents.

Main Features Magazine



The magazine holds 10 rounds and is employed for feeding the cartridges to the rifle. The magazine consists of

1. Magazine housing
2. Floor plate
3. Follower with spring

Safety Instructions

General Handling and Use

As with all firearms this rifle is potentially lethal if misused. You must read and fully understand this manual before using this rifle, if there is anything that you do not understand get help from someone who is qualified in the safe handling of firearms

- Always handle the rifle as if it is loaded even if you have checked or have watched someone else check to be sure it is unloaded.
- Never point the rifle at anything you do not intend to shoot
- Never take anyone's word that the rifle is unloaded. Always check for yourself and even then handle the rifle as you would a loaded firearm
- Always check the rifle is unloaded and that the magazine is removed before laying it down or handing it to another person
- Always keep and carry the rifle unloaded with the hammer released except when you intend to shoot
- Be aware that dropping the rifle or any other severe impact may damage some part of the mechanism. Even if you cannot see the damage. it may cause the rifle to fire when you do not intend to and cause injury, death or damage to property. If you have dropped or suspect that the rifle may have been dropped or subject to impact have it examined by a competent gunsmith before using it.

- Never leave the rifle loaded and ready to fire
- Never leave the rifle unattended even if you believe that it is unloaded
- Always instruct children regarding the dangers of all firearms. Even if you do not teach your children to shoot ensure that they know about the safe handling of firearms. If you do teach your children to shoot always ensure that they know how to treat and use a firearm properly and always supervise them closely.
- Always be sure that the backstop behind any target you are intending to shoot is adequate to stop and contain the bullets before you fire. Any rifle will penetrate a significant quantity of some materials such as wood or dirt.
- Do not shoot any target even if you have a good backstop if you cannot see the area behind the target clearly to ensure that it is safe
- Always carry the rifle unloaded with the magazine removed until you are ready to shoot
- Always ensure that the barrel bore, chamber and action are clean and free of obstructions and excess lubricant. After use always clean the rifle immediately as this will assist in maintaining the correct function and safety.
- Never consume alcoholic beverages, take drugs or inhale any chemicals before or during shooting, as your coordination, judgment and vision could be impaired, making the use and handling of this rifle unsafe.

- Always seek a Doctor's advice if you are taking medication or are subject to any medical condition, to ensure that you are capable of handling this rifle safely
- Always wear ear protection when shooting. All others in the area of the rifle when it is being fired should use ear protection.
- Always wear approved protective shooting glasses when shooting. Anyone in the area of the rifle during shooting should wear eye protection as firing the rifle may generate flying particles that could damage eyes.
- Always apply the safety when the rifle is loaded until you are ready to fire
- It is important to keep clear and to keep others clear of the ejection port. The spent cartridges are ejected with sufficient force to cause injury and may also be hot. The ejection port should not be obstructed by your hand when clearing the rifle to ensure live rounds are safely ejected. Never place fingers in the ejection port.
- Never place your finger in the trigger guard or squeeze the trigger until you are aiming at the target and are sure you want to shoot
- Always be sure of your target, what lies between you and your target and what lies beyond your target. Rifle ammunition can travel a significant distance after passing through even substantial targets, and may deviate substantially from the intended direction of your shot. Never shoot at any hard surfaces such as rock or a liquid surface such as water. Metal targets must not be used.

- The rifle generates a substantial noise and should not be fired in the vicinity of any animal unless it is trained to accept such noise
- Never undertake any activity that may cause an accidental discharge of the rifle. Do not let your concentration wander during handling or firing any firearm as this may cause the weapon to fire unintentionally
- Always be conscious of what is in front of the muzzle of the rifle even if the rifle has been checked to be unloaded. The rifle must never be pointed at anything you do not wish to destroy.
- Never walk, climb or cross any obstacle with the rifle loaded.
- Always ensure the rifle is unloaded before cleaning, storing, traveling, laying the rifle down or handing the rifle to another person.
- Always store the rifle and ammunition separately and out of sight and such that it cannot be accessed by children or untrained people.
- Never use the rifle for any purpose other than shooting
- Do not dry fire the rifle

- If for any reason the rifle fails to fire when you pull the trigger, keep the rifle pointing at the target or a safe direction and wait for at least 60 seconds. Remove the magazine. If a hang fire has occurred the rifle may fire at any time within the 60 seconds. If the round does not fire eject it by allowing it to fall a short distance onto the ground. Do not eject the round into your hand. Allow the round to rest for a further 120 seconds and then examine the primer. If the firing pin indent is light or no indent is present do not continue firing and have the rifle examined by a competent gunsmith. If the firing pin indent on the case rim is normal (in comparison with other previously fired rounds) the ammunition may be faulty. Separate the faulty round from other live rounds and empty cases, reload the rifle and continue firing in a safe manner. Place the failed round in a safe place away from your immediate vicinity and dispose of the round by returning it to a competent gunsmith.
- Never use the rifle if it fails to function correctly and do not force a jammed action as a round may explode causing serious injury, death or damage to property.
- Do not alter any of the components of the rifle or modify the weapon in any way as the level of safety may be reduced.

Safety Instructions

Safety Features

1. Trigger Guard

The trigger guard is formed by the back of the magazine housing, the front of the pistol grip and a steel strap which extends between these two items, to enclose the bottom of the trigger and protect it from damage and to help prevent accidental discharge.

2. Safety Catch

The rifle has a safety lever on the left hand side of the receiver which locks the trigger to prevent the hammer releasing from the trigger sear. The safety can only be applied when the hammer is cocked but can also be employed when the bolt is held open with the charging handle prior to chambering a round

3. Firing Pin

The firing pin of the rifle is designed so that it will not impact the primer of a cartridge in the chamber of the rifle if the bolt is not fully forward.

IMPORTANT

These safety devices are designed and installed in this rifle to prevent accidental discharge. However this rifle is primarily designed to efficiently discharge bullets and will do so when loaded if you pull the trigger. Always expect the rifle to fire if you pull the trigger.

Function

The Alexander Arms rifle functions by means of direct blow back. When the rifle has a magazine of ammunition in place the bolt can be pulled open by means of the charging handle and then released to feed a round of ammunition into the rifles chamber. The final movement of the bolt allows the hammer to contact the firing pin upon pulling the trigger.

If the rifle is now aimed at a target and the safety is released, pulling the trigger allows the hammer to impact the spring loaded firing pin which in turn ignites the cartridge primer. The flash of flame generated from the primer will now pass to the main cartridge charge which in turn burns with the release of a large volume of gas which drives the bullet down the barrel and on towards the target. Rifling grooves in the barrel impart spin to the bullet during its passage down the barrel and this acts to stabilize the bullet once in flight so it will have a more accurate path.

Inertia energy from the recoil of the case within the chamber acts directly upon the bolt and spring in the recoil cassette which is accelerated back within the gun extracting the spent casing and then ejecting it as the base strikes the ejector which is mounted upon the magazine block

Function

Loading

Caution To minimize the risk of unintentional discharge load live ammunition into the rifle only when you intend to shoot

Caution Always use extreme care to ensure the muzzle is always pointing in a safe direction and is well clear of your body.

Caution Read and understand this manual before you use this rifle.

Loading the magazine

- Use only good quality clean ammunition recommended for this rifle and marked with the appropriate caliber. Always examine each cartridge before it is loaded into the magazine and do not use it if it appears in any way damaged.
- With the open end of the magazine uppermost, grasp the magazine in one hand. Place a round onto the magazine follower with the base just forward of the magazine lips then press the round down and back until the back of the round touches the rear flat edge of the magazine and the round is lodged under the two magazine lips. Place the next round on top of the previous round and repeat the procedure as before. Repeat until the magazine is loaded but do not exceed its capacity.

- When the bolt reaches the rear of its travel it is stopped by the recoil spring and buffer and at this time the next cartridge in the magazine has risen so that the bolt moving forward will strip this cartridge from the magazine and chamber it.
- The action of the bolt also resets the hammer. If the trigger is held, the hammer disconnect catches the hammer and releasing the trigger, sets the hammer back onto the sear. If the trigger is released the hammer resets directly onto the sear. The rifle is now reloaded and pulling the trigger will fire the next round.

Loading the rifle

- Always ensure the rifle is pointed in a safe direction before commencing loading.
- Without a magazine in position pull back the charging handle to open the bolt and allow it to return fully forward. Check that the chamber and barrel are clear and **apply the safety**.
- Keeping fingers clear of the ejection port insert a loaded magazine with the bullets pointing towards the muzzle, into the magazine well and push it firmly home to ensure that the magazine latch is engaged. Do not strike the base of the magazine otherwise the magazine could be damaged or you could injure your hand.
- When you are ready to shoot pull the charging handle to the rear and allow it to run freely forward ensuring that the charging handle catch is engaged at the forward position this will feed a round into the chamber. **The rifle is now loaded, cocked and ready to fire.**
- To fire the rifle the safety must be moved to the fire position and the trigger pulled. Upon firing **the rifle will reload for the next shot**. The safety should be reapplied if you do not intend to shoot immediately and the rifle should be unloaded as soon as you have finished.
- Always unload the rifle after use, before moving and before any cleaning, maintenance and storage.

Unloading the rifle

- Always ensure that the rifle is pointed in a safe direction with the safety applied. Do not touch the trigger and always keep hand away from the ejection port and muzzle.
- Place a hand under the magazine to prevent it falling and press the magazine catch to eject the magazine. Place the magazine on a clean surface to avoid damaging it.
- Grasp the charging handle and pull it to the rear. Any cartridge in the chamber should be extracted by this action and will eject from the ejection port. **Always check to ensure that the chamber and barrel are clear keeping the rifle pointed in a safe direction.**
- Allow the bolt to return forward onto the empty chamber. Keeping the rifle pointed in a safe direction move the safety to the fire position and pull the trigger to allow the hammer to drop.
- Examine any previously chambered cartridges for dents or damage; if damaged do not use again.

Firing

- Before firing, ensure that you are fully familiar with the operation of the rifle. Practice aiming and handling with your rifle, while it is unloaded.
- Practice on a firing range before going hunting or using the rifle for any other type of shooting.
- Read and understand all the instructions and the safety instructions for this rifle. If you do not understand any instruction seek help from someone qualified.
- Load the rifle as previously described
- When you are ready to safely fire the rifle, aim carefully at the target and pull the trigger smoothly so that you do not disturb your aim. Be aware that the rifle will recoil upon firing and you need to return it to aiming at the target before firing the next round.
- **THIS IS A SEMI-AUTOMATIC RIFLE AND IS IMMEDIATELY LOADED AND COCKED READY TO FIRE AGAIN AFTER EACH SHOT UNTIL THE MAGAZINE IS EMPTY.**
- Always apply the safety if you do not intent to shoot immediately. And unload the rifle before moving and before any cleaning, maintenance and storage.

Maintenance

This rifle is a precision mechanism and will function better, last longer, and remain safer when it is properly maintained and lubricated. The advice in this section will help keep your rifle in good condition.

WARNING

- **Ensure that the rifle is unloaded before disassembly and cleaning.**
- Wear safety glasses. Some components in the rifle are spring loaded and may fly free if you lose control of them.
- Never dry fire the rifle with the upper receiver removed from the gun.
- Do not alter any parts as the level of safety will be reduced.
- Do not force any parts during the assembly, disassembly and cleaning of the rifle.

Lubricants

- **Always minimize skin contact with lubricants**

For all normal conditions the rifle should be operated in a lightly lubricated condition after cleaning, using CLP or Mil-Tech and the lower receiver parts should be lubricated with CLP or Mil-Tech. These lubricants will function in all but the coldest conditions and can be used down to -35 F although application below 0 F requires the lubricant to be warmed. When applying CLP always shake the bottle before use and clean and apply using a clean rag or cloth.

The bolt, firing pin, firing pin retainer, ejector and extractor assembly should be inspected for any damage before cleaning and lubrication.

When applying lubricant, a light film implies that the surface is only just visibly oily while a heavy film implies the oil can be smeared with a finger.

CLP and/or Mil-Tech lubricant can be obtained from all good gunsmiths.

Tri-flow may be substituted for CLP or Mil-Tech in cold weather if action is sluggish. Tri-flow may be obtained from Gunsmith's and many bicycle shops.

Firearm Disassembly

- Always ensure the rifle is unloaded and work on a clean flat surface with ample lighting
- Push out the rear takedown pin as far as it will go from the lower receiver and pivot the upper open



- Push out the receiver pivot pin



- Separate the upper and lower receivers



- Pull back the bolt and charging handle



- Remove the bolt assembly and place to one side



- Remove the charging handle by pulling it to the rear and then lifting it upwards through the slot in the receiver.



Firearm lubrication and cleaning

- Use the pull through or a cleaning rod to pull a tight fitting patch lubricated with Hoppes Elite Bore Gel through the bore of the barrel from the chamber to the muzzle.



- Repeat this procedure until the patches come out clean
- Clean out the chamber with the brush provided.
- Using a paper towel tear a small section and wrap around the brush, use this to wipe the chamber dry
- The chamber will require cleaning and wiping at regular interval (100 to 200 rounds) to ensure reliable operation during use.
- Lightly lubricate the magazine catch as required.

- Wipe down the internal and external surfaces with a patch or rag and a few drops of CLP. Finish by applying a light film of lubricant to all surfaces of the receiver and barrel.
- Clean all surfaces of the bolt thoroughly with CLP.



- Clean and lightly lubricate the surfaces of the carrier key.



- Generally clean the lower receiver using a brush to assist cleaning the trigger mechanism. Apply a few drops of CLP to the inside of the tube that houses the recoil spring and buffer.



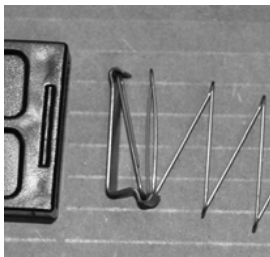
Firearm Assembly

- Replace charging handle in upper receiver and push in part way.
- Replace bolt group in upper and slide fully forward.
- Place upper receiver pivot pin hole in line with the lower receiver pivot and push in pin.
- With the hammer cocked and the safety set to safe, pivot the two halves together and insert the take down pin.
- Pull back the charging handle and then let it slide back forward to ensure the mechanism is moving freely. If the mechanism sticks or will not move, remove the take down pin and check that the bolt assembly and charging handle move easily then repeat the assembly.
- If the mechanism still sticks get the rifle inspected by a qualified gunsmith.

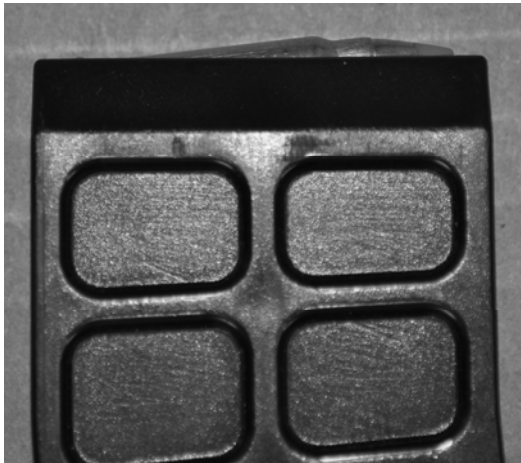
Magazine

The magazine for this rifle requires only occasional maintenance. Generally it is only necessary to wipe down the outside of the magazine and around the magazine lips as far as the follower can be pushed down. However the magazine must be fully dismantled and cleaned if used extensively and heavily fouled by firing residue. The base plate is removed by snapping it off the magazine, being retained by two detents.

Caution must be taken during the disassembly as the magazine contains a spring that may fly free. After the base is removed carefully pull out the spring and follower being careful to note how the follower and spring fit. The magazine parts may now be cleaned and lubricated before reassembly in reverse order to disassembly. The following indicates how the follower mounts onto the spring before reassembly.



The magazine is an extremely critical part of the rifle and any damage to lips may cause the rifle to jam. Check that the magazine presents rounds as shown and replace if it does not or is worn excessively.



Unusual Operating Environments

- Extreme Cold/Arctic

This rifle is designed to operate at temperatures down to -35 F with standard lubrication. However excess lubricant will cause sluggish action. When operating at low temperatures the weapon must be cleaned and lubricated while warm.

When using the rifle it must be kept dry to prevent the mechanism from freezing and the mechanism should be functioned by hand every 30 minutes. If possible try to avoid moving the rifle from cold to warm areas as this will cause condensation to form on the parts. Always wipe all areas of the rifle dry both externally and internally and re-lubricate if condensation does occur.

The ammunition and magazine must be kept dry. Ammunition should not be lubricated.

CLP may provide sluggish action at low temperatures and Tri-Flow may be substituted. It should be removed and the weapon cleaned and lubricated with CLP if returned to temperate operating conditions.

- Tropical and Temperate Rainforest.

Wet conditions drastically increase the rate of corrosion in an incorrectly protected weapon. If the rifle is employed in wet conditions, use CLP to clean and lubricate as shown but increase the frequency of cleaning to a minimum of daily and pay particular attention to hidden internal parts in the rifle. The barrel should be cleaned and lubricated more frequently and areas such as the barrel extension, bolt head, trigger mechanism, buffer, magazine and bolt carrier should be lubricated with CLP.

Constant precipitation will wash the lubricant from the rifle and deposit dirt.

- Hot, Dry and Dusty

If the rifle is to operate in a hot environment, then light lubrication with CLP is adequate and the normal quantities should be used. If the environment is also dusty then the rifle must be cleaned more frequently and careful attention should be paid to remove any abrasive deposits. Desert conditions may also produce large temperature swings between the day and night and consequently condensation can also occur. Again the frequency of cleaning should be increased and efforts should be made to prevent dust contamination. If possible the rifle should not be laid on the ground. The chamber will require to be wiped out more frequently.

Service and Repair

Should this rifle require repair or service, make sure it is not loaded and then take it to a gunsmith who is familiar with this type of weapon. Replacement parts should only be used from Alexander Arms as the quality of some parts may not meet the requirements of the design and injury, death or damage to property may result from such use. Alexander Arms does not accept responsibility for the function of this weapon if replacement parts are used from any other supplier or the rifle is in any way modified.

References

For further information on the operation of this weapon this instruction and safety manual can be supplemented with the following manuals

- Operators Manual W/component list rifle 5.56-mm M16A2 - US Army Technical Manual (TM) 9-1005-319-10 August 1986.

VIII. Assembly of upper kit.

The derives most of its utility in the ability to use a standard AR15 style 5.56 caliber lower receiver together with an upper kit to assemble a rifle to fire 17 HMR ammunition.

The upper kit for the 17 HMR includes the complete upper with charging handle and bolt, the mag block and the recoil cassette together with magazines.

Assembly is relatively easy but if in doubt please refer the work to a gunsmith familiar with such procedures.

- Beginning with the lower receiver with the upper removed, first remove the spring and buffer if present by depressing the buffer retainer.
- With the aid of a small punch use finger pressure to hold the hammer and push out the hammer pivot pin. This may take a little force to overcome the retention spring within the hammer.
- Lift the hammer out of the receiver and noting the orientation of the hammer spring place to one side.
- It may now be possible to slide the recoil cassette into the stock tube. If the stock is a telescoping type the cassette simply slides into place and is retained by the buffer retainer. If the stock is of the fixed type and uses the longer tube the cassette spacer must first be inserted and then the cassette again being retained by the buffer retainer.

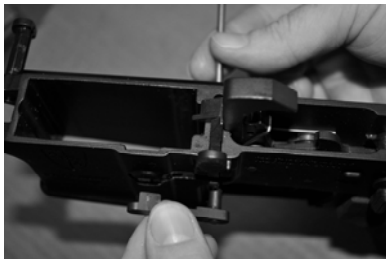
Main Features

- The recoil cassette should be installed with the rubber base pad at the bottom of the receiver extension tube so that the black aluminum buffer and retaining clip of the cassette are visible after installation.
- In some instances the bolt hold open catch may preclude easy insertion of the recoil cassette. Use a small punch to remove the spring pin that retains the bolt catch being careful to retain the spring and buffer from this parts assembly.
- After the recoil cassette is in place use a small punch to refit the bolt hold open catch
- The hammer assembly may now be refitted checking the operation of this unit for safe and fire functions after the unit is in place.



Depress the magazine catch button to the greatest extent using either finger pressure or a soft punch or wooden dowel such that the catch is free of the side of the receiver.

- Unscrew the catch from the magazine button and the tension spring noting the number of turns.
- Without removing pressure from the magazine button, replace the catch with the extended catch in the parts kit and screw this into position with the same number of turns as the previous catch.
- Remove pressure from the magazine catch button and examine the position of the rod within the button. It may be necessary to adjust the magazine catch either tighter or looser which may be done by depressing the magazine catch as above and rotating the catch in the appropriate direction.



- Insert the magazine well block, provided in the kit of parts into the magazine well, depressing the magazine catch enough to let it move to flush with the bottom of the magazine well.
- Using a hex wrench lightly tighten the set screw at the rear of the magazine block to prevent any movement. Taking care to ensure that the magazine latch still moves freely.



- The upper receiver may now be replaced following the instructions provided earlier. Take care when closing the action not to bend the ejector which is mounted in the magazine block.



IX. Break-in Procedure.

The is unusual in that the unit may require an initial break in period in order to achieve the best reliability. This is resultant from the extremely low recoil impulse that the cartridge imparts to the rifle mechanism. Any slight rough or high spots resulting from manufacture will initially cause sluggish motion and the rifle may not completely cycle. This is nothing to be alarmed about and should cease within the first 100 rounds.

In order to best break in the rifle, the bolt and interior surface of the upper receiver should be cleaned and lubricated lightly with CLP at frequent intervals during the initial use of this weapon. Magazines should be cleaned and the magazine catch may need the application of a few drops of CLP to ensure that it consistently retains the magazines during use.

The chamber will require to be cleaned with the brush provided and then wiped with a small patch of paper towel wrapped around the brush. It is not advisable to use any oil in the chamber and CLP should be avoided as it will decrease the accuracy if it enters the bore.

Warranty Statement

Based on the Magnuson-Moss Warranty act, Alexander Arms offers no express warranty on any of its products. However in recognition of the obligations of implied warranty Alexander Arms will stand behind all its products and will provide all reasonable support for the products it supplies.

Any component that fails within the first year of service subject to reasonable wear and tear will be replaced free of charge for that part. Alexander Arms reserves the right to determine if a part is subject to abuse.

This warranty statement is subject to further terms of contract for all military or agency purchases.

Models

The Alexander Arms rifle is available in a number of configurations.

For current information please visit: www.alexanderarms.com

Alternately please email: support@alexanderarms.com

Customer service line is (540) 639 8356.

